

PRODUCT SPECIFICATION

ITEM CODE: CWD
DESCRIPTION: COUNTER TOP WATER DISPENSER WITH RO FILTRATION
BRAND: AQUAPRO

**UV
Disinfection**



**100 GPD
RO**



PRODUCT SPECIFICATION:

STAGES:	DESCRIPTION:
1st Stage	PP: Removes particles before purification process.
2nd Stage	CTO: Removes chlorine, taste, odor, color.
3rd Stage	Membrane (RO): Greatly Reduces salt in the water.
4th Stage	Post-Carbon: Absorbs impurities, enhances purification process.
5th Stage	UVC: Ultraviolet light for disinfection.

PRODUCT SPECIFICATION

Product Specification for WATER DISPENSER:

Taps: COLD – AMBIENT- HOT

Cold Tank Capacity: 2.2L

Cooling Capacity: 6-12°C 2L/H

Hot Tank Capacity: 1.5L

Heating Capacity: 85-95°C 5L/H

Voltage: 220-240V, 50/60Hz

Product Size: 23.1 x 51.6 x 51.1 cm

PRODUCT INTRODUCTION

The tabletop dispenser with RO (Reverse Osmosis) or UF (Ultrafiltration) is a compact and convenient water purification system designed for home or office use.

It offers a practical solution for obtaining clean and safe drinking water directly from the tap. The dispenser utilizes advanced RO or UF technology to effectively remove impurities, contaminants, and harmful substances, ensuring the water is of the highest quality and taste.

Countertop Water Dispenser

CWD-208R



Hot



Cold



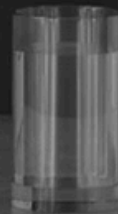
RO



UV

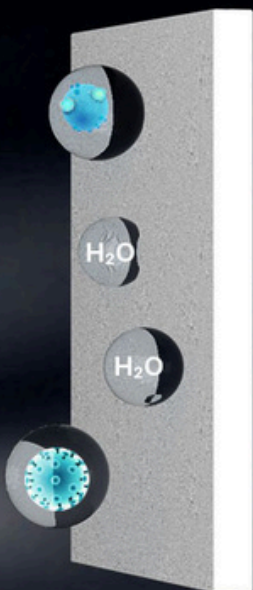


Child Lock



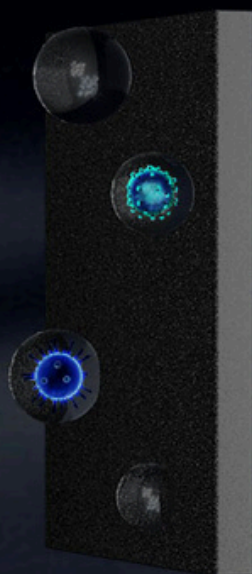
4 Stages RO Filtration

With a filtration accuracy of $0.01\ \mu\text{m}$, the Ultrafiltration membrane filters out most bacteria, and viruses larger than $0.01\ \mu\text{m}$.



PP Sediment Filter

Remove
rust, sediment



Carbon Block Filter

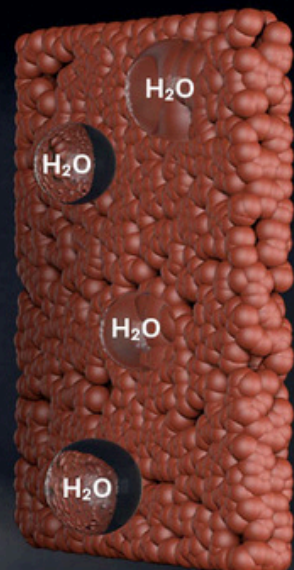
Remove
chlorine, odor



$0.0001\ \mu\text{m}$

RO Filter

Remove
1000+ impurities



Carbon Block Filter

Improve taste



UV LAMP
Sterilization



Low Noise
Air-cooled Condenser



Child Lock
Safe Operation



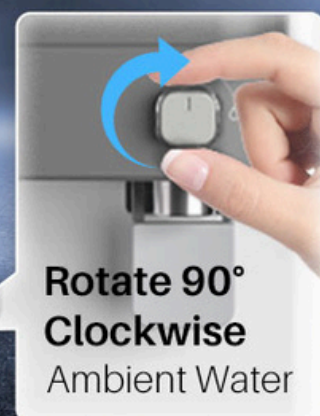
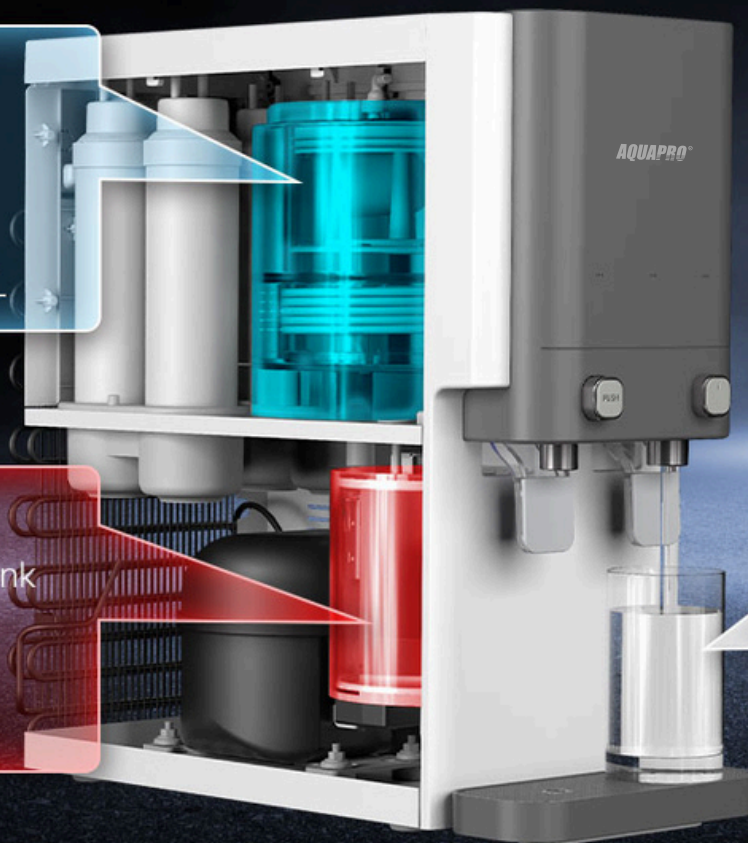
Hot, Cold & Ambient Water

Cold Water

LG Compressor
Temperature: 6-12°C
Cold water rate: 2L/H
Cold water capacity 2.2L

Hot Water

304 stainless steel hot tank
Temperature: 85-95°C
Hot water rate: 5L/H
Hot water capacity 1.5L



**Rotate 90°
Clockwise**
Ambient Water

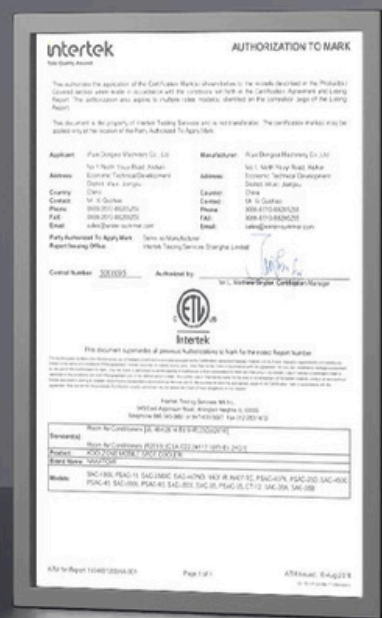
Home

Apartment

Office

Apartment

CB CE CCC FCC ETL



COLOR OF YOUR CHOICE

WHITE



BLACK



FEATURES

Countertop Water Dispenser

CWD-208R



Hot



Cold



RO



UV



Child Lock



CB CE CCC FC ETL

4 Stages RO Filtration + UV Lamp

1



PP

Remove
rust, sediment

2



CTO

Remove
chlorine, odor

3



Reverse Osmosis

Remove
1000+ impurities

4



T3314

Improve
taste

FILTERS

Hot, Cold & Ambient Water



FUNCTIONS

☄
PUSH
Hot Water: 85-95°C /
185-203°F

*
PUSH
Cold Water: 6-12°C /
42.8-53.6°F

💧
Rotate 90° Clockwise
Ambient Water

DIMENSIONS



Dimensions:
23.1 x 51.6 x 51.1cm
9.1" x 20.3" x 20.1"